



# FLOORSEALER



Installation recommendation for the economical renovation of resilient floorings.



# KLB FLOOR SEALER RANGE



## KLB FLOOR SEALER 100 Transparent

Transparent, low-emission and environmentally friendly 2-component sealer on the basis of polyurethane for refurbishing and renovating top floors. The sealer is light-stable, offers a beautiful matt look and good stain resistance.

- ✓ matt surface
- ✓ abrasion-resistant
- ✓ low-emission according to **EMICODE® EC1 PLUS**
- ✓ low susceptibility to staining
- ✓ light-stable



## KLB FLOOR SEALER 200 Color

Coloured, low-emission and environmentally friendly 2-component sealer on the basis of polyurethane for refurbishing and renovating top floors. The sealer is light-stable, offers a beautiful matt look and good stain resistance.

- ✓ high covering power
- ✓ great variety of colours
- ✓ abrasion-resistant
- ✓ low-emission according to **EMICODE® EC1 PLUS**
- ✓ light-stable

## KLB FLOOR CLEANER PS 350 Grundreiniger



Base cleanser for preparing top floors for subsequent renovation within the KLB FLOOR SEALER systems. For removing maintenance films and stubborn soiling on linoleum, PVC, rubber and rubber stud coverings.

- ✓ good dissolving power
- ✓ high effectiveness
- ✓ low foaming
- ✓ all-purpose use

# Content

## Substrate preparation

Basic cleaning and surface preparation	Page 2
Neutralisation and rinsing	Page 3

## System KLB FLOOR SEALER ECONOMIC

Economic coloured sealing of top floors	Page 4
---	--------

## System KLB FLOOR SEALER EXCLUSIVE

High-quality decor sealing of top floors	Page 6
--	--------

### Which substrates are suitable?

**KLB FLOOR SEALER** was developed for the renovation and upgrading of old, heavily loaded or out-of-date resilient floorings (e.g. PVC, vinyl, linoleum and many more).

Any top floor to be renovated must be firmly bonded to the substrate. Breakouts, holes, and other unevenness can be filled or sanded with KLB's elastic coating compounds. If necessary, partial detachments must be re-glued with coating.

The surface needs to be freed from loose dirt by sweeping or vacuuming. Old coverings require prior cleaning and mechanical preparation. For this purpose, please follow the procedure in this installation recommendation.

## Substrate preparation

# Basic cleaning and surface preparation

In the course of substrate preparation, remove loose and adhering dirt, as well as old sealants or care films by basic cleaning. Before starting cleaning work, however, clear the room and mask off any non-removable parts or adjacent surfaces. Dry (coarse) soiling must be removed by sweeping with a broom and/or vacuuming. Sticky or wet (coarse) dirt must be picked up by wiping.

The dosage of the basic cleaner is to be set according to the specifications in the table. Please follow these instructions to achieve a good cleaning result.

Type of cleaning	Recommended cleaning agent	Dosage
Basic cleaning	KLB FLOOR CLEANER PS 350 - Universal base cleanser	1 - 3 litres into 10 litres of water

Underfloor heating must be switched off 24 hours prior to cleaning so that the floor can warm up to room temperature and the basic cleaner does not dry prematurely.

Spread the premixed cleaning solution evenly over the surface and brush it in intensively with a single-disc machine and a hard disc brush or alternatively, with a blue floor pad. Edge areas must be worked thoroughly with a hand pad holder and also with the blue pad.

As soon as the surface is completely wetted, the basic cleaner must be left to soak in for 10 to 15 minutes. During this time, the floor needs to be protected from drying out due to draughts.



**KLB special cleaning pad P 200**

The actual surface preparation for applying the subsequent layers is carried out by treatment with the **KLB special cleaning pad P 200** and the single-disc machine. In this process, the flooring is cleaned of dirt, at the same time sanded and made ready for the application of the sealer. The edge areas must be carefully worked with a hand pad. **Important:** For heavier soiling and on rubber stud coverings, prepare the substrate with the more abrasive **KLB special cleaning pad P 100**.

The dirt is then picked up with a wet vacuum cleaner without leaving any residue. A soft rubber mop can be used to remove the liquid from the edge or corner areas and to collect it with the Hoover's suction nozzle.



# Neutralisation and rinsing

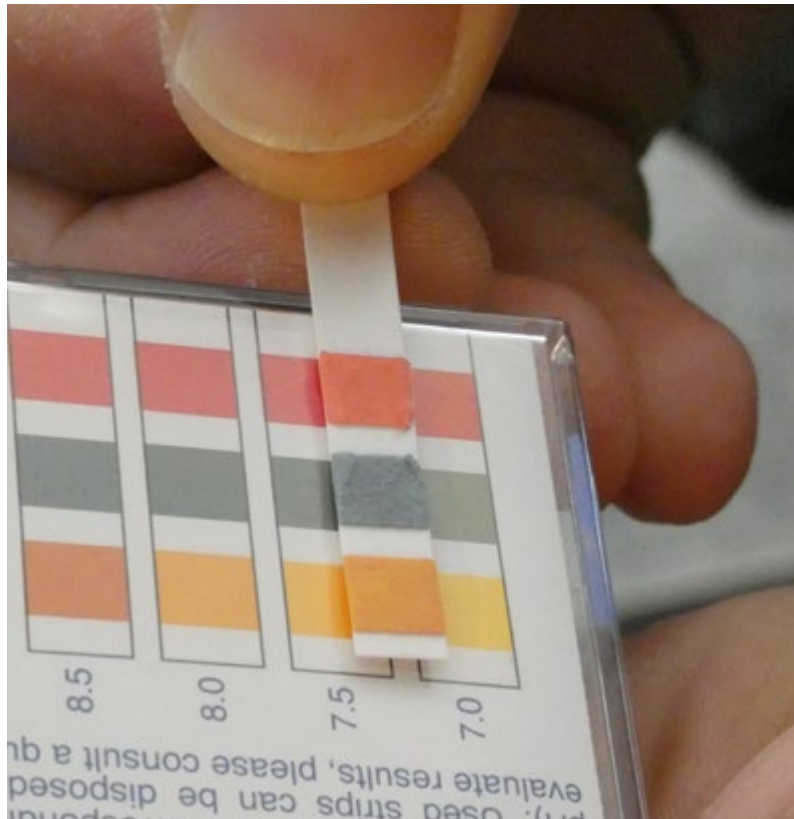
The thoroughly prepared and sanded floor covering must then be neutralised and cleaned off to be residue-free.

On the one hand, this can be done with a brush vacuum cleaning machine. During mechanical cleaning, the remaining moisture is absorbed with a mist-damp mop.

On the other hand, two-step manual cleaning is also possible. To do so, pre-wet the surface with fresh, lukewarm water and then wipe it with a clean, mist-damp mop so that residues or mop water are completely removed.

The surface must have a neutral pH value of approx. 7 to 8 before starting to seal. This can be checked with an indicator paper (e.g. from the pharmacy or drugstore). If the pH value is too high ( $\text{pH} > 8$ ) or if there is still visible dirt or residue on the surface, repeat the neutralisation/clear rinse.

After sufficient cleaning, allow the surface to dry. In rooms with bad ventilation, residual water can collect in depressions in the covering. This needs to be picked up again with a mop. If the rooms are poorly ventilated, air handling units or drying equipment can be used to enable faster drying.



The surface must be completely clean after neutralisation and rinsing. After full drying, the entire floor must have a clearly visible matt, polished appearance.

If this is not the case or if partial areas are still glossy, especially in the corners of the room or with narrow spatial geometry, these surfaces must be reworked with a **120 P sanding grid**. If necessary, affected zones should be cleaned again after grinding to achieve a completely evenly sanded, clean and dry floor for the subsequent sealing.



# KLB FLOOR SEALER ECONOMIC

The single-colour system **KLB FLOOR SEALER ECONOMIC** is applied in two sealing layers and thus offers the possibility of an economical, time-saving renovation of old surface coverings.

## Base layer

The application of the base coat with **FLOOR SEALER 200 Color** is usually done along the short edge of the room if it is rectangular. Pre-paint the edge areas on the head side and then always work in parallel, type "wet in wet", along the surface application.

Pillars and other connections in narrow room geometries have to be treated at the same time. The base layer should only be applied so far that a wet edge is always present and parallel working is possible. The time frame until the rolled edge is dry is a maximum of 5 to 7 minutes. If this is not observed, drying marks and colour changes may occur.

**FLOOR SEALER 200 Color** is applied by one or more persons, depending on the size of the area, with an orange microfibre roller, pile height 16 mm / 25 cm width. Ensure an even application and check the consumption quantities. Organise the installation work in a way that re-rolling and finishing can take place immediately afterwards. This is done in crosswise motion (90° to the application direction) using an orange microfibre roller, pile height 6 mm in a roller width of 50 cm.

The finishing and re-rolling are carried out directly after application. The roller is rolled

without pressure at a steady speed, if possible in the direction of light incidence.

When working on the surface, we recommend wearing shoes with blunt nails to ensure walkability.

## Top layer

After sufficient drying, apply the coating with **FLOOR SEALER 200 Color** using the same procedure as for the base coat. If further layers of sealer are required, apply them exactly like before.

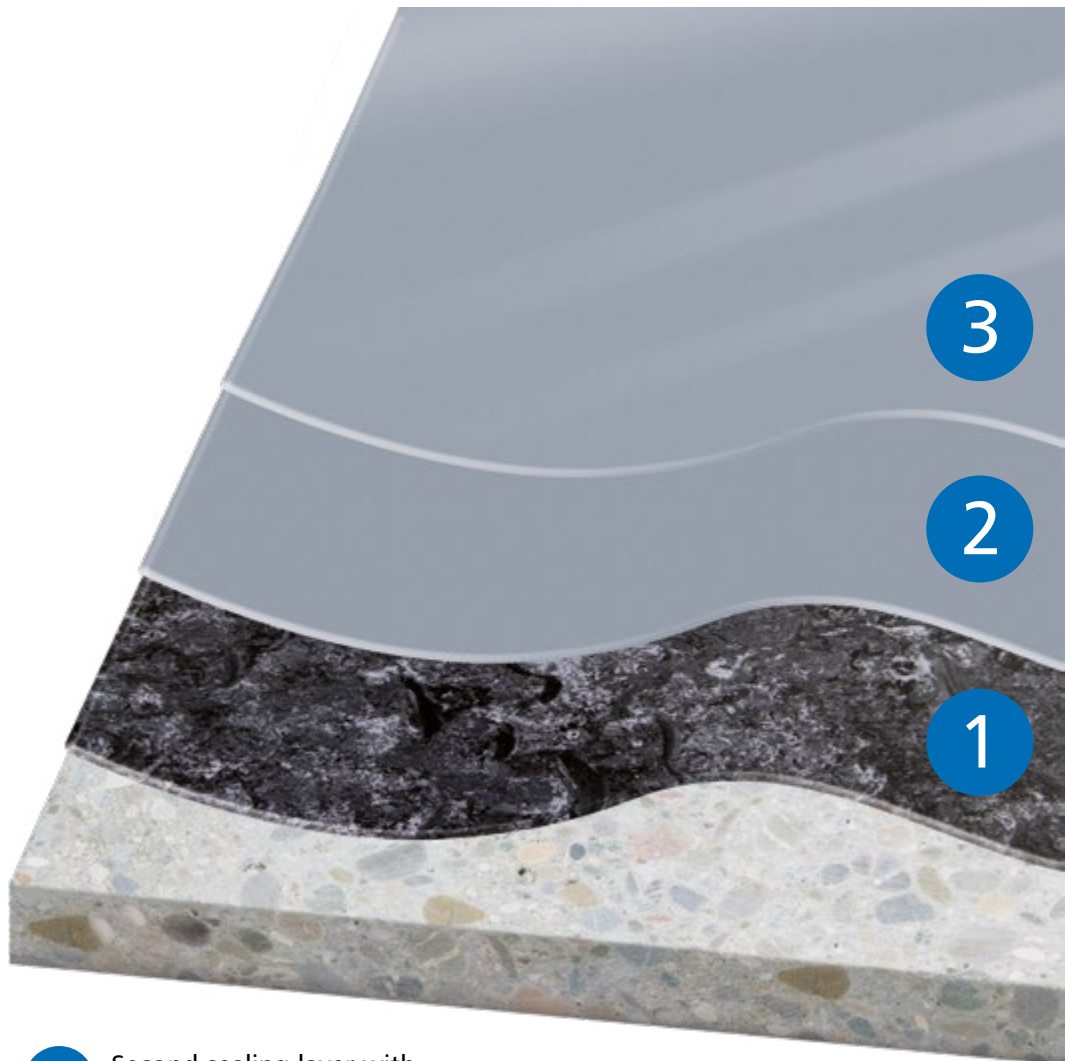
**Important note:** If dark old floor coverings are sealed with a light colour of **FLOOR SEALER 200 Color**, a third sealing coat may be necessary to achieve complete colour coverage.

This applies in particular to the following shades: White, Yellow, Orange and Light Grey tones.

### Technical data

Consumption <b>FLOOR SEALER 200</b> Colour per layer	approx. 0.12 - 0.15 kg/m <sup>2</sup>
Curing time	12 - 16 hours at 20 °C / 68 °F

# SYSTEM KLB FLOOR SEALER ECONOMIC



- 3** Second sealing layer with  
KLB FLOOR SEALER 200 Color
- 2** First sealing layer with  
KLB FLOOR SEALER 200 Color
- 1** Old flooring with recommended preparation

# KLB FLOOR SEALER EXCLUSIVE

System **KLB FLOOR SEALER EXCLUSIVE** is applied in three sealing layers. The coloured primer is followed by a top coat of the same colour, which can optionally be scattered with **partiColor® chips No. 1**. The final sealing consists of a transparent top and wearing layer.

## Decorative colouring

For more visually appealing floor surfaces that are less susceptible to visible soiling, **partiColor® chips No. 1** can be scattered into the second sealing layer while the floor is still being installed (see **ECONOMIC** system build-up).

The chips are freely selectable in colour and must always be scattered not in full (with a maximum coverage of 70% of the surface). For coatings where a higher dirt input is to be expected, particularly high-contrast chip mixtures are useful. Please note the recommended consumption quantities.

Scattering is done with a bedding aid such as a compressed air driven hopper gun, an autonomously operating Chiron blower or a Wolf WE-B universal spreader. The **partiColor® chips No. 1** are scattered in segments/lanes. Make sure that the area of the wet edge is free of **partiColor® chips** to exclude a later overlay.

After the sealer has dried/cured, remove the excess **partiColor® chips**. The loose flakes can be carefully swept off with a broom. Remove weakly adhering chips with a brush if necessary. Be careful not to soil the surface when walking on it (wear overshoes).

## Transparent top sealing

Finally, apply the transparent, matt top sealer **FLOOR SEALER 100 Transparent** in the same way as the previous coats.

This sealer achieves an optimal starting point for subsequent use. **FLOOR SEALER 100 Transparent** improves the floor's wear properties and protects the **partiColor® chips No. 1** from mechanical or chemical stress.

### Technical data

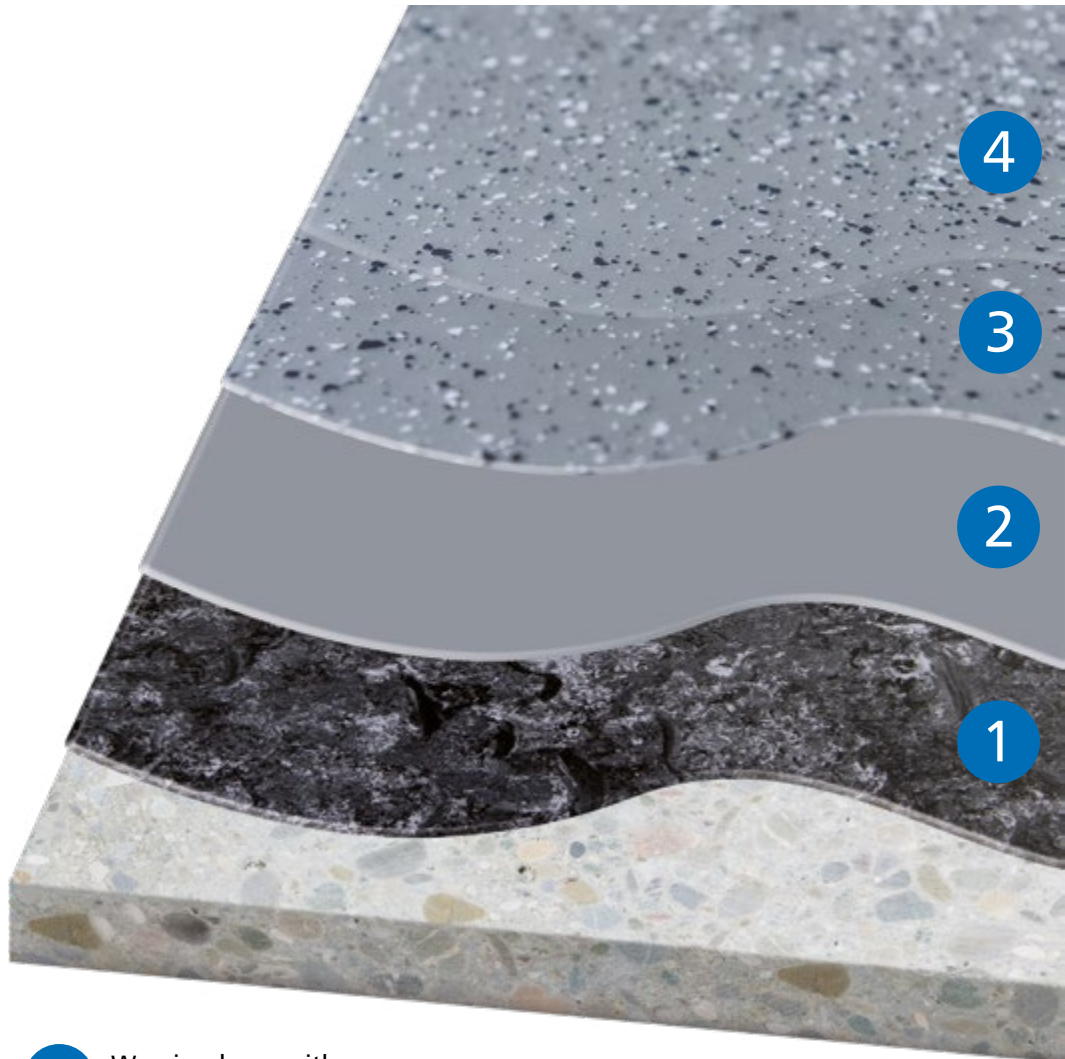
Consumption <b>FLOOR SEALER 100 Transparent</b>	approx. 0.14 - 0.16 kg/m <sup>2</sup>
Curing time	12 - 16 hours at 20 °C / 68 °F

### Decorative colouring

Consumption <b>partiColor®-Chips No. 1</b>	openly scattered approx. 25 - 80 g/m <sup>2</sup>
---	--



# SYSTEM KLB FLOOR SEALER EXCLUSIVE



- 4** Wearing layer with  
**KLB FLOOR SEALER 100 Transparent**
- 3** Second sealing layer with  
**KLB FLOOR SEALER 200 Color**  
and optionally, scattering not in full with **partiColor®-Chips No. 1**
- 2** First sealing layer with  
**KLB FLOOR SEALER 200 Color**
- 1** Old flooring with recommended preparation

**Our system**

**KLB  
SYSTEM  
FLOOR  
SEALER**

# Your advantages

- fast and economic renovation of old top floors
- low odour, noise and dust nuisance during refurbishment
- short downtimes until reusability
- easy, user-friendly processing
- upgrading the existing floor in colour and/or appearance
- ecological, solvent-free, low-emission top sealer
- slip-resistance adjustable in accordance with BGR
- suitable for use in foodstuffs according to German Food and Feed Code
- certified as low-emission according to "Eurofins Indoor Air Comfort Gold" and EMICODE® EC1 PLUS

# FLOOR SEALER

**KLB FLOOR SEALER** range was developed for the economic renovation and upgrading of old, heavily loaded or out-of-date resilient floorings (e.g. PVC, vinyl, rubber, linoleum and many more). **KLB FLOOR SEALER** enables the visual enhancement of old floor coverings and, compared to conventional coatings, requires only short downtimes until reuse.

The simple, user-friendly application of the low-emission and solvent-free **KLB FLOOR SEALER** systems **ECONOMIC + EXCLUSIVE** offer both functional and visual advantages over other floor coverings. The products and systems are certified with the "Eurofins Indoor Air Comfort Gold" and the EMICODE® EC1<sup>PLUS</sup> label as particularly low in emissions and environmentally friendly, which makes them especially suitable for indoor use. The coverings can also be adjusted with slip resistance based on BGR and have food suitability according to the German Food and Feed Code (LFGB).

This installation recommendation deals step by step with the correct preparation and execution of surfaces with **KLB FLOOR SEALER 100 Transparent** and **KLB FLOOR SEALER 200 Color** in combination with the cleaner **KLB FLOOR CLEANER PS 350** for extremely low dust, noise and odour renovation works.



**KLB KÖTZTAL Lacke + Beschichtungen GmbH**

Günztalstraße 25  
89335 Ichenhausen, GERMANY

[info@klb-koetzta1.com](mailto:info@klb-koetzta1.com)

Phone: +49 (0) 8223-96 92-0

Fax: +49 (0) 8223-96 92-100



Certified  
according to ISO 9001.



[www.klb-koetzta1.com](http://www.klb-koetzta1.com)