

## Maximum freedom of design with PU 484



Absolutely transparent and UV-stable 2-component clear resin sealant for use on smooth coatings, as top sealer on scattered coverings or as binding agent component for floors with partiColor®-Glitter flakes or partiColor®-Metalize pigments.

**partiColor®-Metalize** – Metallic effect floorings created by mixing in fine pigments and using special wiping techniques.

**partiColor®-Glitter** – Coatings with distinct glitter look by admixing light-diffusing, sparkling particles.

**Insertion of print inlays** – (Thick layer) transparent clear resin mirror applied onto coverings with incorporated screen prints, e.g. pictures, lettering, logos.

### Areas of application:

- coloured quartz sand scattered coatings of grades R10 to R12, e.g. for exhibitions, showrooms
- slip-resistant coverings in wet areas and the food processing industry (kitchens, butcheries)
- coatings in outdoor areas, e.g. patios, balconies, logias
- decorative coverings with glossy, transparent clear resin surface on a single-coloured PU or EP floor with marbling created in wiping techniques
- coverings with graphic screen print, metallic effect floors, etc.

## The systematic approach to great flooring.

You can find more products, systems, references and brochures on our website:



[www.klb-koetzal.de/en/systemfinder](http://www.klb-koetzal.de/en/systemfinder)



[www.klb-koetzal.de/en/klb-references](http://www.klb-koetzal.de/en/klb-references)

Follow us also on these channels:



@klbkoetzal



KLB KÖTZTAL Lacke + Beschichtungen GmbH

Günztalstraße 25

89335 Ichenhausen, GERMANY

[info@klb-koetzal.de](mailto:info@klb-koetzal.de)

Phone +49 (0) 8223-96 92-0

Fax +49 (0) 8223-96 92-100



[www.klb-koetzal.com](http://www.klb-koetzal.com)



## Brilliant prospects: Decorative effect floors with KLB



KLB-SYSTEM POLYURETHAN PU 484

High-quality design floors with wow effect

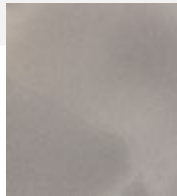
## Premium look through iridescent metal effects

Prior to application, **partiColor®-Metalize** pearlescent pigments are mixed into **PU 484** to create sophisticated high-gloss, marbled surfaces with a metallic finish. The appearance of the floor ultimately depends on the type of application, the colour of the substrate as well as the colour of the Metalize pearl gloss pigments. Let our specialists advise you.

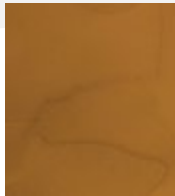
Olympia Mix



Metalize Gold\*



Metalize Silver\*

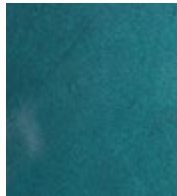


Metalize Bronze\*

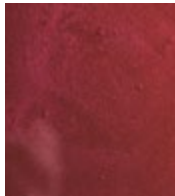
Base colours



Metalize Blue\*

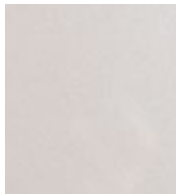


Metalize Green\*

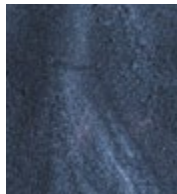


Metalize Red\*

Salt and Pepper



Metalize Silver\*



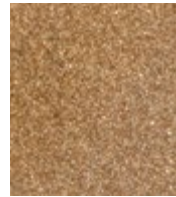
Metalize Pepper\*

\* The strikingly decorative appearance of the coating largely depends on the colour of the PU 410 base coat. Please note the detailed product information and installation commendation. If necessary, also request our colour chart.

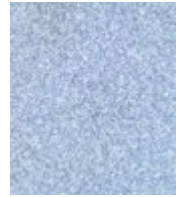
Pigments of different colours can also be combined during application by blending them into each other, or even already during mixing.

## High-quality glitter coatings with a noble character

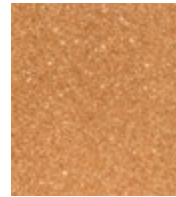
**partiColor®-Glitter** coverings are decorative floorings that create an intensive and impressing light sparkling effect by mixing in glitter particles of approx. 1 mm in size.



Light Gold\*



Light Silver\*



Copper\*

Due to this size, the glitter flakes are clearly visible in the hardened coating. The **partiColor®-Glitter** is mixed into the already prepared **KLB-SYSTEM POLYURETHAN PU 484** directly before application.

## Spectacular high-end floors with PU 484:

- certified as low-emission according to Eurofins "Indoor Air Comfort Gold"
- transparent and free of turbidity
- light-stable
- very good chemical resistance
- good plasticiser and stain resistance
- glossy surface, optionally with matting
- weatherproof and early water-resistant
- capable for wet rooms
- as top sealer for slip-resistant scattered coatings of grades R10 to R12, e.g. in kitchens

## Unique and personalised floor graphics

Highly individual floorings can be created by insertion of textile prints. Graphic print screens such as lettering, logos or pictures are incorporated, fixed and sealed after curing with one – or for a higher mirror effect with several – clear resin layers.



The print inlay can be designed according to your own wishes and ideas in any colour, shape or size.



### Digital prints are available directly from our partner:

HIS Print & Service GmbH & Co. KG · Zur Schönhalde 1  
D-89352 Ellzee · [www.his-print-service.de](http://www.his-print-service.de)

For detailed information on the application of KLB effect flooring with PU 484, please request the separate installation instructions. Our technicians will be happy to answer any questions you may have.

Here you can find more details, media and product information:



Scan QR code or open link in browser:  
[www.klb-koetzel.de/en/pu-484-effect-floors](http://www.klb-koetzel.de/en/pu-484-effect-floors)

