

# OBJECT INSIGHT

INSIGHT INTO VERY SPECIAL OBJECTS

INDUSTRY AUTOMOTIVE, GARAGES, CAR PARKS AGRICULTURE FOODSTUFFS HEALTHCARE OFFICES, PUBLIC FACILITIES EXTERNAL SURFACES SPECIAL SOLUTIONS



*Stylish living space  
and "Man Cave" in Kapellen*

# The Object

Private residence in  
Kapellen with exclusive  
living standards  
2950 Kapellen, BELGIUM

**Category:** Entire living area,  
sanitary facilities, hobby  
room and garage  
**Area size:** 800 m<sup>2</sup>

**Floor coating:**  
PU coating according to  
functional requirements  
and colour concept  
Stone carpet flooring with  
pore-closure

**Area type:**  
Living and hobbyroom for  
leisure use, garage

**Requirements:**  
Visually appealing and  
jointless surface, harmonising  
with the exclusive interior  
design, easy to clean, scratch-  
and impact-resistant





## *Continuous spatial flow within an open-plan living*

Across both ground and upper floors of this exclusive residence, a seamless flooring system with high design standards was installed. The basis is the low-emission, elastic coating **KLB-SYSTEM POLYURETHAN PU 420**, sealed with two layers of the colour-stable **PU 806 E**. The result: a pleasantly matt, design-focused surface with consistent appearance and premium feel.

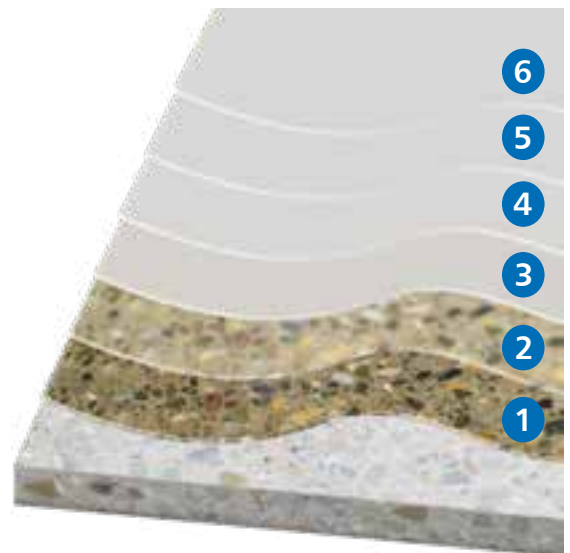
### **Safe flooring in wet areas and sanitary facilities**

The flooring continues into the bathrooms – complemented by an additional elastic intermediate layer of **PU 426** to reliably seal the substrate. This low-emission, crack-bridging waterproofing protects the floor structure against moisture. For wet zones, the top sealers **PU 812 E** and **PU 811 E - R10** are recommended.

This created uniform surfaces with both decorative and functional value – from walk-in shower to living area.

### **Functionality down to the last detail – all tailor-made**

Special attention was paid to consistent cross-room detailing: All wall pull-ups were made from the same material. The size and complexity of the project required extra precise solutions, such as around load-bearing columns or at the large glass panels that channel daylight from the ground floor into the hobby room below.



### **System build-up\***

6. Third sealing layer with  
**KLB-SYSTEM POLYURETHAN PU 805 E - R10**
5. Second sealing layer with  
**KLB-SYSTEM POLYURETHAN PU 806 E**
4. First sealing layer with  
**KLB-SYSTEM POLYURETHAN PU 806 E**
3. Top coat  
**KLB-SYSTEM POLYURETHAN PU 420**
2. Scratch coat with  
**KLB-SYSTEM EPOXID EP 50** and mixed sand  
**KLB-Mischsand 2/1**
1. Primer  
**KLB-SYSTEM EPOXID EP 57**

\*In the wet area was used the elastic intermediate layer  
**KLB-SYSTEM POLYURETHAN PU 426**

\* This is an individual  
system build-up for dry areas.  
Please seek advice for shower and wet areas!



## *A retreat with character – robust and design-driven*

The stone carpet using **KLB-SYSTEM EPOXID EP 158** gives the basement a powerful look – distinctive, matt and high-quality. In both the “Man Cave” with bar and exclusive billiard table, and the adjoining luxury garage, the flooring was applied on a double primer with **KLB-SYSTEM EPOXID EP 52**. This created two spaces with a consistent design language – but tailored to different functional needs.

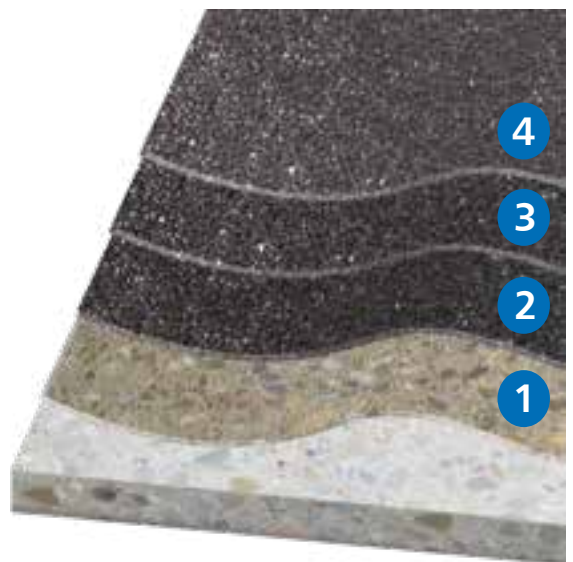
### Sealing solutions – adapted to each space

In the hobby room, the single-component **KLB-SYSTEM DEKOR DS 925 Porenfüller** pore filler was applied: a low-emission, glossy hardening pore-closure compound designed for living areas. It closes pores for an easy-to-clean surface while keeping the natural stone carpet look. Ideal for interiors without permanent wet exposure.

In the garage, the water- and chemical-resistant **KLB-SYSTEM EPOXID EP 177** was used – a transparent, thixotropic 2-component epoxy resin with excellent durability.

In areas subject to occasional moisture from vehicles or tyres, this pore sealer reliably protects against liquid penetration and ensures a robust, long-lasting surface without compromising appearance.

Installation of the seamless stone carpet placed special focus on the visual interplay of dark flooring, lighting and spatial effect.



### System build-up garage \*

4. Pore-closure with **KLB-SYSTEM EPOXID EP 177**
3. Varnish layer with **KLB-SYSTEM EPOXID EP 158**
2. Decorative pebble coating with **KLB-SYSTEM EPOXID EP 158**
1. Two coats of primer using **KLB-SYSTEM EPOXID EP 52**

### System build-up hobby room \*

3. Pore closure with **KLB-SYSTEM DEKOR DS 925 Porenfüller**
2. Decorative pebble coating with **KLB-SYSTEM EPOXID EP 158**
1. Two coats of primer using **KLB-SYSTEM EPOXID EP 52**

\* This is an individual system build-up.





## Insight

### *Aesthetics meets function*

Jointless floors in the living area – matt, stylish and comfortable underfoot. What first appears as purely aesthetic design also proves to be technically sound: in wet rooms, the design is backed by a well-thought-out technical solution: the elastic **PU 426** waterproofing layer serves as a crack-bridging, moisture-resistant barrier beneath the decorative floor design. It ensures long-term protection against water ingress from showers or bathrooms – system-tested and fully integrated into the seamless build-up.



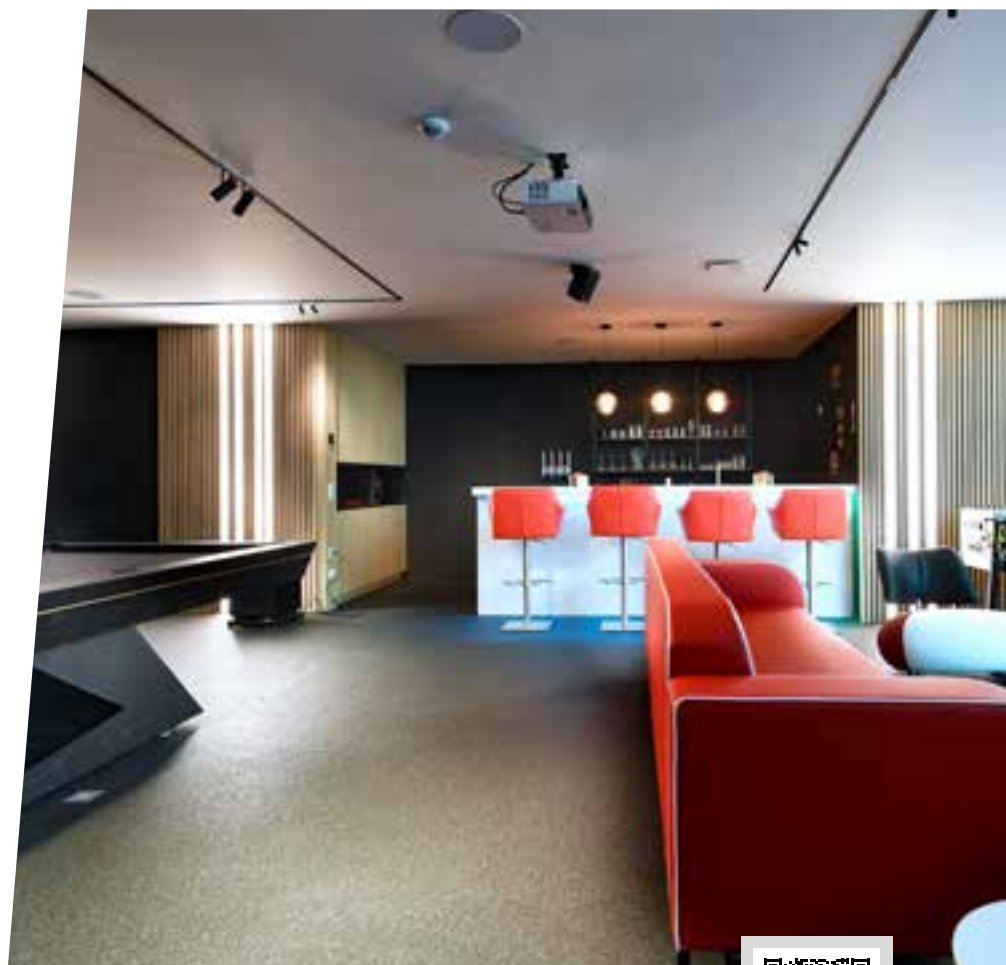
Scan the QR code on your smart phone or open the following link to get to the digital version:  
[www.klb-koetzal.de/en/references/offices-and-public-facilities/luxury-house-belgium-living-room](http://www.klb-koetzal.de/en/references/offices-and-public-facilities/luxury-house-belgium-living-room)



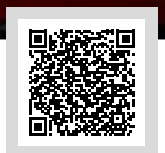


## *Seamless stone carpet for the "Man Cave"*

More than a hobby room: this Man Cave is a carefully orchestrated mix of technology and aesthetics. Here, the flooring sets the scene – the room is both retreat and stage: for billiards, parties, and a showcase for sports cars. The continuous stone carpet is not only a design element, but a statement – technically refined and perfectly matched to its use. It doesn't get much more lifestyle than this.



Scan the QR code on your smart phone or open the following link to get to the digital version:  
[www.klb-koetzal.de/en/references/offices-and-public-facilities/luxury-house-belgium-stone-carpet](http://www.klb-koetzal.de/en/references/offices-and-public-facilities/luxury-house-belgium-stone-carpet)

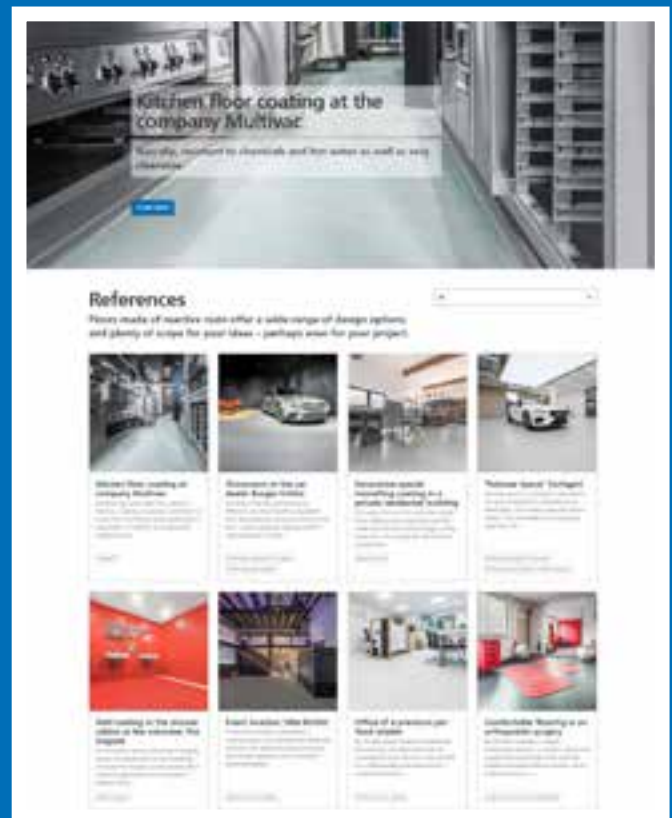


# The systematic approach to great flooring.

You can find more systems and references on our website:



[www.klb-koetzal.de/en/systemfinder](http://www.klb-koetzal.de/en/systemfinder)



[www.klb-koetzal.de/en/klb-references](http://www.klb-koetzal.de/en/klb-references)

**Please note:** This Object Insight brochure shows exemplary build-ups for a specific area of application. It does not replace qualified, object-specific advice from KLB for your project. All stated information is based on our experience and technical preparation. We guarantee the correct and proper quality of our products. We do not assume responsibility for the work not carried out by us, since we have no influence on the processing or processing conditions on site. We recommend on-site trials to be conducted in individual cases. In addition, our "General Terms and Conditions" apply.



**KLB KÖTZTAL** Lacke + Beschichtungen GmbH  
Günztalstraße 25  
89335 Ichenhausen, GERMANY  
info@klb-koetzal.com  
Phone +49 8223 9692-0  
Fax +49 8223 9692-100



Certified according to ISO 9001.



Visit us online.

Facebook Instagram LinkedIn YouTube Twitter @klbkoetzal