

Problem simply solved in a few minutes



Since priming or covering work may only be started after cracks have been sealed on a suitable substrate that is as level and prepared as possible, the fast-curing, universally applicable product **KLB-SYSTEM POLYURETHAN PU 1900** offers an uncomplicated, quick solution.

KLB-SYSTEM POLYURETHAN PU 1900

The particularly reactive 2-component polyurethane special resin is suitable for cracks or joints in concrete and screed as well as for bonding construction elements. Also suitable in a compact 0.5 kg spray bottle for mixing the material.

The universally applicable **KLB-SYSTEM POLYURETHAN PU 1900** proves to be a real all-rounder and compact construction site assistant that should not be missing from any construction site tool box.



That's convincing!

- very fast-curing material
- consistent to hydrolysis and saponification
- short downtimes on the construction site
- can be coated with epoxy resins without intermediate sanding
- to be processed without pre-priming

The systematic approach to great flooring.

You can find more products, systems, references and brochures on our website:



www.klb-koetzal.de/en/systemfinder



www.klb-koetzal.de/en/klb-references

Follow us also on these channels:



KLB KÖTZTAL Lacke + Beschichtungen GmbH

Günzstalstraße 25

89335 Ichenhausen, GERMANY

info@klb-koetzal.com

Phone: +49 (0) 8223-96 92-0

Fax: +49 (0) 8223-96 92-100



www.klb-koetzal.com



The compact site assistant: a multi-talent on the ground.

KLB-SYSTEM POLYURETHAN PU 1900
for fast crack and joint renovation



Available in a conveniently small packaging unit



KLB-SYSTEM POLYURETHAN PU 1900 is delivered in a 0.5 kg spray bottle per packaging unit – adapted to the consumption on the construction site. The product fits into every construction site tool box and vehicle. It is therefore always with you and immediately ready to use.

Areas of application:

- for cracks in the substrate.
- for sealing dummy joints.
- for bonding profiles, metal rails, angles and other construction components.
- for force-fit injections on walls and floors.
- for anchoring dowels.



Fast and easy application

Components A and B are mixed with the practical packaging unit provided. Component B is added to component A in the sufficiently large spray bottle and then shaken vigorously.



The filling of the crack with the mixed material is carried out generously and completely, so that the low-viscosity resin can penetrate well into the pores, cracks and capillaries. Excess material can be easily removed afterwards.

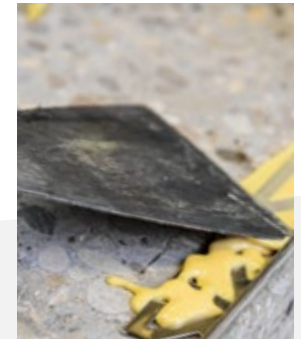


Thanks to its particularly good penetrative properties and wettability, **PU 1900** is also suitable for critical substrates. Additionally, it is extremely tolerant to moisture.



Effectiveness and efficiency with one product

After a short waiting time of **25 - 30 minutes** after application, the product is completely cured and can be mechanically loaded again. A further coating onto the levelled substrate is possible after **40 minutes**. The result is a force-fit bond with good adhesion and chemical resistance.



KLB-SYSTEM POLYURETHAN PU 1900 is a practical helper for any construction site. The universal properties of this special resin accelerate the preparation of coatings in many situations. When mixed with sand, PU 1900 can also be used as a rapid-setting and quickly recoatable repair mortar. **Only one product** is needed to serve universal application areas – which saves costs and unnecessary waiting time.

KLB-SYSTEM POLYURETHAN PU 1900

Mixing ratio	A : B = 100 : 100
Processing time	10 minutes (at 20 °C / 68 °F)
Processing temperature (room and floor)	Minimum 10 °C / 50 °F
Curing time and further coatings after	approx. 40 minutes (at 20 °C / 68 °F)
Flexural strength (28 days)	5 N/mm ² (1 : 5 with KLB 1)
Compressive strength (28 days)	20 N/mm ² (1 : 5 with KLB 1)