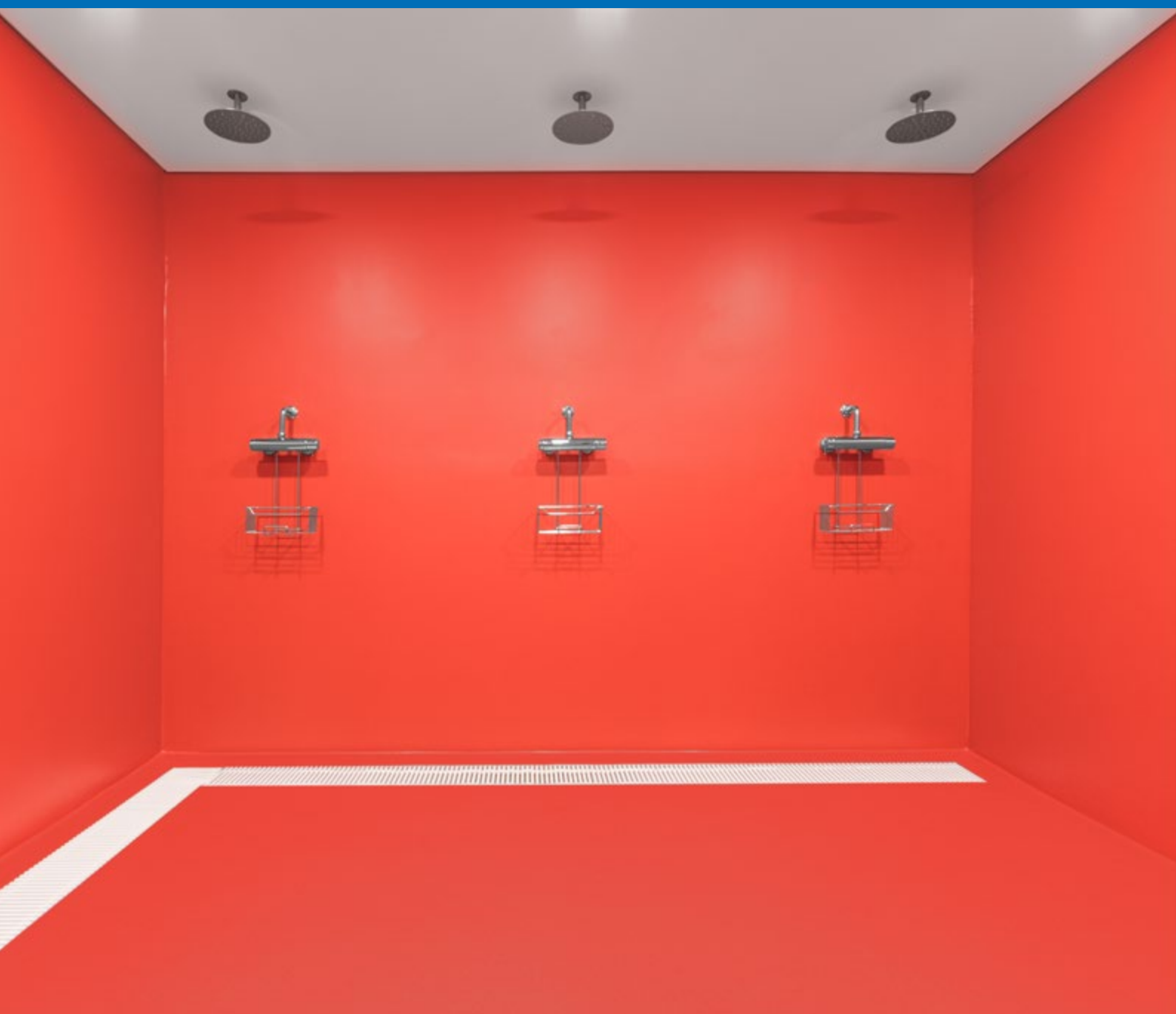


# OBJECT INSIGHT

INSIGHT INTO VERY SPECIAL OBJECTS

INDUSTRY AUTOMOTIVE, GARAGES, CAR PARKS AGRICULTURE FOODSTUFFS HEALTHCARE OFFICES AND PUBLIC FACILITIES EXTERNAL SURFACES SPECIAL SOLUTIONS



*Shower cabins at the fire brigade*

 KLB  
KÖTZTAL

# The Object

New station of the  
volunteer fire brigade  
D-89312 Günzburg

**Category:** Showers

**Area size:** 20 m<sup>2</sup>

**Completion:** June 2020

**Floor covering:**

Jointless, decorative floor  
covering

**Area type:**

Wet surfaces in hygienic  
areas

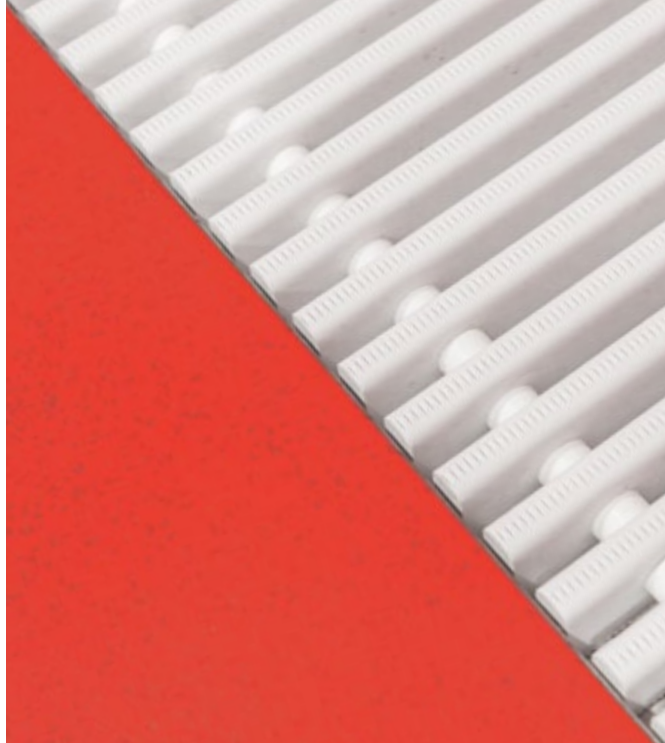
**Requirements:**

High-quality, decorative sur-  
faces, installed without  
joints and from one single  
mould



## *Insight: Hygienic eye-catcher*

The wet areas in the changing rooms of the Günzburg volunteer fire brigade can be described as extremely striking. The fiery red design of the floor and wall coating combined with excellent technical product characteristics results in a surface that is durable and easy to clean over the long term.



Jointless installation of the connections for a high level of cleanliness.



With coloured flakes scattering for a subtle decor.

# ***KLB DECOR LOW-VOC PU Light Sealed***

*OFFICES AND PUBLIC FACILITIES / SPA AND FITNESS*

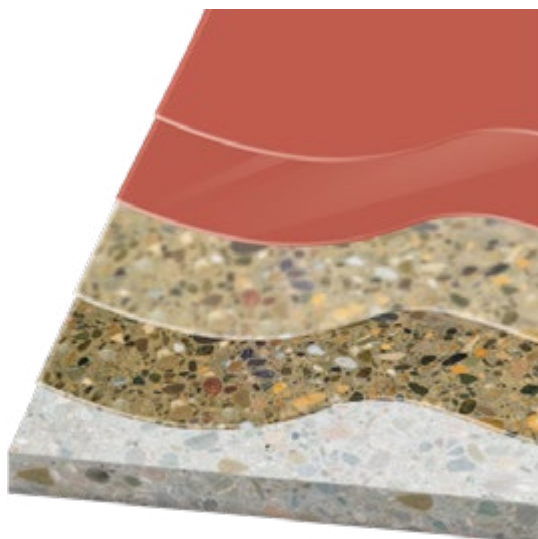


**SYSTEM G7 KLB DECOR LOW-VOC PU Light Sealed** is a low-emission floor coating with an attractive surface appearance. Since the system build-up has been certified according to Indoor Air Comfort Gold, it is predestined for use in recreation areas, such as in showers or locker rooms.

The idea came up to design the wet areas of the changing rooms in an eye-catching fire-red colour tone. Openly scattering with **partiColor®-Chips** size 1 in RAL 3001 creates a subtle decor. The applied transparent matt sealer gives the surface an even and high-quality look.

The sealer also ensures a permanently low tendency to stain and at the same time protects the covering from soiling, for example by cleaning agents. Please note the separate Object Insight report for the wall coating!

The jointless drain connections and the transition from floor to wall are easy to clean and offer only little surface for dirt to accumulate. In the wet area, **PU 426** should be used as an additional flexible waterproofing layer. For increased resistance to permanent wet load, it is recommended to seal with **PU 882** which, however, does not guarantee low emissions.



Matt sealer  
**KLB-SYSTEM POLYURETHAN PU 805 E**

Top coat  
**KLB-SYSTEM POLYURETHAN PU 410**, openly scattered with decorative flakes **partiColor®-Chips** size 1

Scratch coat with  
**KLB-SYSTEM EPOXID EP 57** and mixed sand  
**KLB-Mischsand 2/1**, openly scattered with quartz sand  
**KLB-Quarzsand 0.3/0.8 mm**

Primer  
**KLB-SYSTEM EPOXID EP 57**



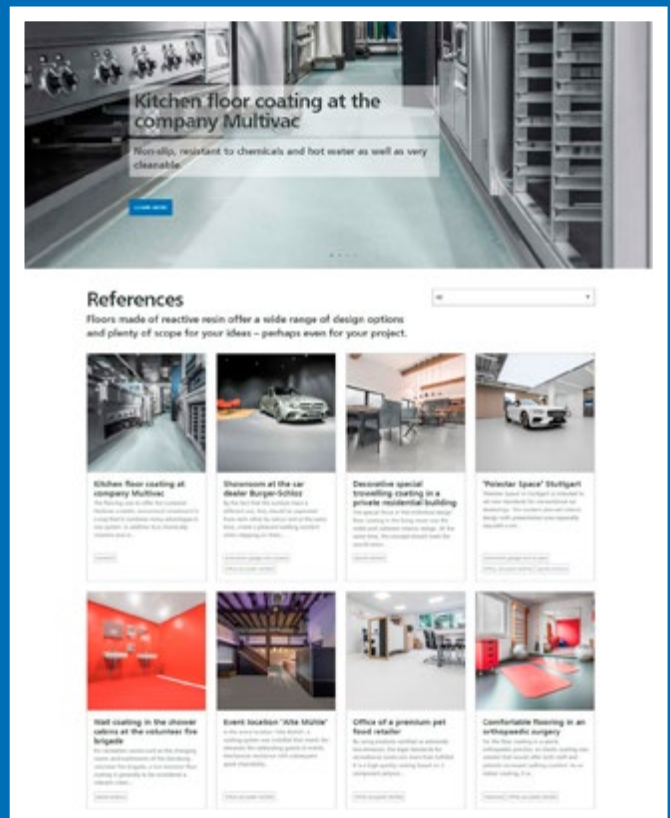
Scan the QR code on your smart phone or open the following link to get to the digital version:  
[www.klb-koetzta.de/en/references/offices-and-public-facilities/flame-red-showers-at-a-fire-station](http://www.klb-koetzta.de/en/references/offices-and-public-facilities/flame-red-showers-at-a-fire-station)

# The systematic approach to great flooring.

You can find more systems and references on our website:



[www.klb-koetzal.de/en/systemfinder](http://www.klb-koetzal.de/en/systemfinder)



[www.klb-koetzal.de/en/klb-references](http://www.klb-koetzal.de/en/klb-references)

**Please note:** This Object Insight brochure shows exemplary build-ups for a specific area of application. It does not replace qualified, object-specific advice from KLB for your project. All stated information is based on our experience and technical preparation. We guarantee the correct and proper quality of our products. We do not assume responsibility for the work not carried out by us, since we have no influence on the processing or processing conditions on site. We recommend on-site trials to be conducted in individual cases. With the publication of this new KLB product brochure, all prior information loses validity. The latest version is available electronically on our website [www.klb-koetzal.com](http://www.klb-koetzal.com). In addition, our "General Terms and Conditions" apply.



**KLB KÖTZTAL Lacke + Beschichtungen GmbH**

Günztalstraße 25  
89335 Ichenhausen, GERMANY

[info@klb-koetzal.com](mailto:info@klb-koetzal.com)

Phone: +49 (0) 8223-96 92-0

Fax: +49 (0) 8223-96 92-100



Certified according to ISO 9001.



[www.klb-koetzal.com](http://www.klb-koetzal.com)