

OBJECT INSIGHT

INSIGHT INTO VERY SPECIAL OBJECTS

INDUSTRY AUTOMOTIVE, GARAGES, CAR PARKS AGRICULTURE FOODSTUFFS **HEALTHCARE** OFFICES, PUBLIC FACILITIES EXTERNAL SURFACES SPECIAL SOLUTIONS



Modern dentist's office

 **KLB
KÖTZTAL**

The Object

Modern dentist's office
D-72184 Horb am Neckar

Category: Doctor's office
Area size: 160 m²
Completion: May 2020

Floor covering:
Jointless, decorative and
low-emission floor covering

Area type:
Practice area and hallways

Requirements:
A modern, high-quality look
combined with good cleana-
bility

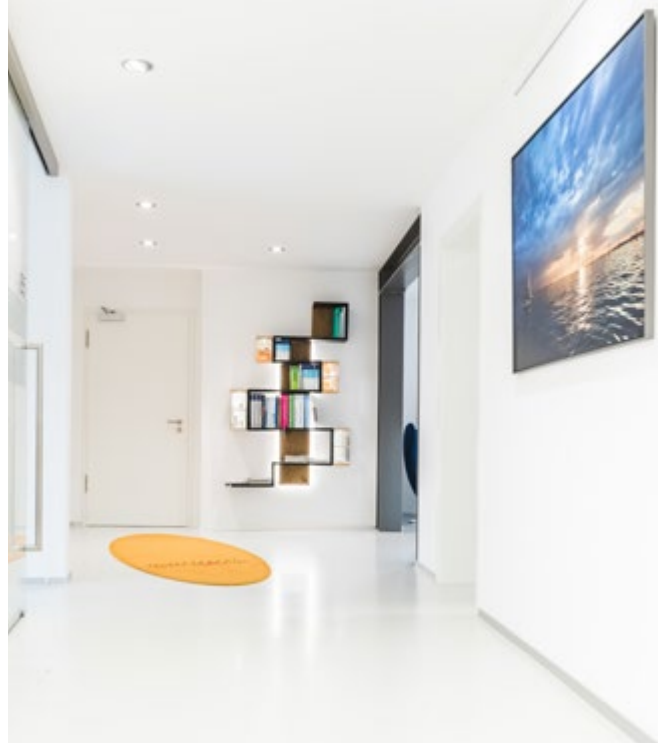


Insight: Modern and hygienic

The consistent, visually highly attractive floor impression runs seamlessly through all rooms of the dental practice. Besides a low-emission certification for recreation areas, good cleanability of the jointless flooring and protection against yellowing are just some of the advantages resulting from the system in use here.



Jointless installation for a high level of cleanliness and easy cleaning.



Clean floor design with visual accents in harmony with the furnishings.

KLB INDUSTRIAL LOW-VOC PU Comfort Sealed

HEALTHCARE / LOW-EMISSION COATINGS

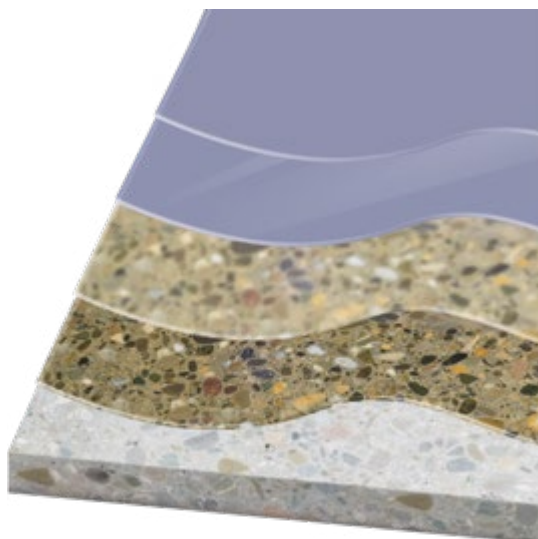


The system **G3 KLB INDUSTRIAL LOW-VOC PU Comfort Sealed** is an elastic, deformable and low-emission floor covering with pleasant walking comfort under light mechanical loads. In addition to public facilities, typical areas of application can also be found in the healthcare sector with high visual demands. The low-VOC coating is certified according to "Indoor Air Comfort Gold" which makes it predestined for recreation rooms. The system products used are approved for sustainable building according to DGNB, LEED and Minergie ECO.

The design task for the dentist's office was to achieve a high-quality, bright and calm appearance. An elegant and

modern overall image with a clean, white colour tone was created by applying **PU 425 Comfort** together with the coloured matt sealant **PU 806 E**.

This system fully meets the high demands on hygiene in the medical industry. Optimum cleanability is achieved through jointless installation. The design floor seamlessly connects all areas of the dental practice. The system's good technical properties ensure a permanently low tendency to soiling and at the same time protect against staining. In combination with a light-stable and coloured sealer, the floor covering can remain brilliant white, even when the surfaces are exposed to sun light.



Coloured matt sealer
KLB-SYSTEM POLYURETHAN PU 806 E

Top coat
KLB-SYSTEM POLYURETHAN PU 425 Comfort

Scratch coat
KLB-SYSTEM EPOXID EP 57 with mixed sand
KLB-Mischsand, openly scattered with quartz sand
KLB-Quarzsand

Primer
KLB-SYSTEM EPOXID EP 57

Scan the QR code on your smart phone or open the following link to get to the digital version:
www.klb-koetzal.de/en/references/healthcare-en/modern-dentists-office

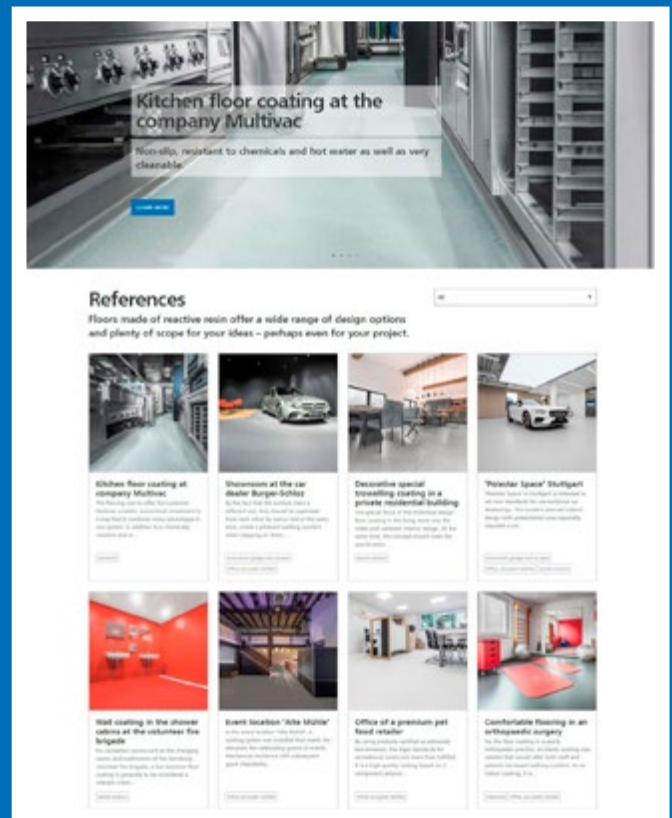


The systematic approach to great flooring.

You can find more systems and references on our website:



www.klb-koetzal.de/en/systemfinder



www.klb-koetzal.de/en/klb-references

Please note: This Object Insight brochure shows exemplary build-ups for a specific area of application. It does not replace qualified, object-specific advice from KLB for your project. All stated information is based on our experience and technical preparation. We guarantee the correct and proper quality of our products. We do not assume responsibility for the work not carried out by us, since we have no influence on the processing or processing conditions on site. We recommend on-site trials to be conducted in individual cases. With the publication of this new KLB product brochure, all prior information loses validity. The latest version is available electronically on our website www.klb-koetzal.com. In addition, our "General Terms and Conditions" apply.



KLB KÖTZTAL Lacke + Beschichtungen GmbH

Günztalstraße 25
89335 Ichenhausen, GERMANY

info@klb-koetzal.com

Phone: +49 (0) 8223-96 92-0

Fax: +49 (0) 8223-96 92-100



Certified according to ISO 9001.



www.klb-koetzal.com