

# OBJECT INSIGHT

INSIGHT INTO VERY SPECIAL OBJECTS

INDUSTRY AUTOMOTIVE, GARAGES, CAR PARKS AGRICULTURE FOODSTUFFS HEALTHCARE OFFICES AND PUBLIC FACILITIES EXTERNAL SURFACES SPECIAL SOLUTIONS



*Office of a premium  
pet food retailer*

# The Object

Office of a premium  
pet food retailer  
D-72160 Horb

Category: Offices  
Area size: 160 m<sup>2</sup>  
Completion: May 2020

**Floor covering:**  
Decorative, jointless,  
low-emission floor covering

**Area type:**  
Office space and WC

**Requirements:**  
Modern, high-quality look  
and good cleanability

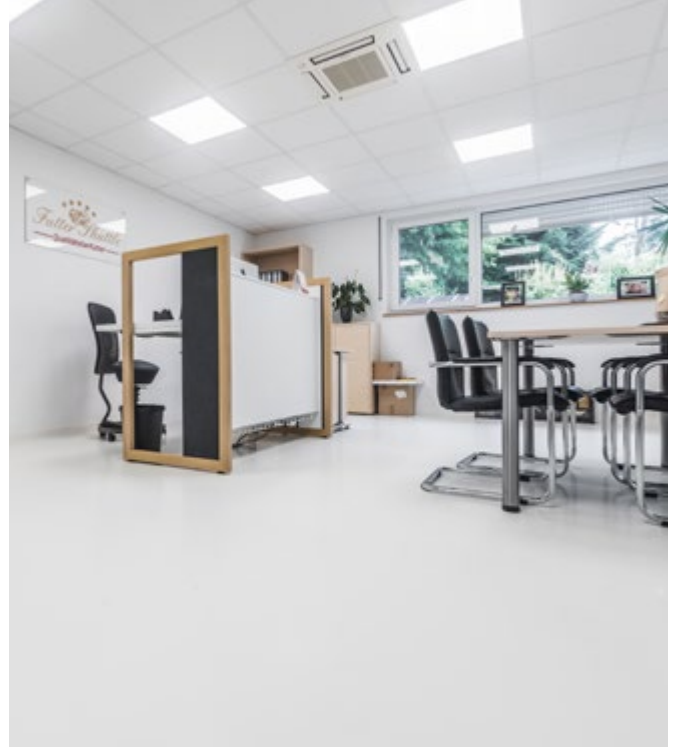


## *Insight: Light-stable and low-emission*

Especially in common areas such as offices, low-emission floor coatings must be installed to ensure good indoor air quality. The light, elegant-looking covering is also economically and ecologically sustainable in the long term due to its colour stability and good technical properties.



Jointless installation for a high level of cleanliness and easy cleaning.



Noble and clean floor design – permanently light-stable.

# ***KLB INDUSTRIAL LOW-VOC PU Comfort Sealed***

*OFFICES AND PUBLIC FACILITIES / OFFICE AND ADMINISTRATION*

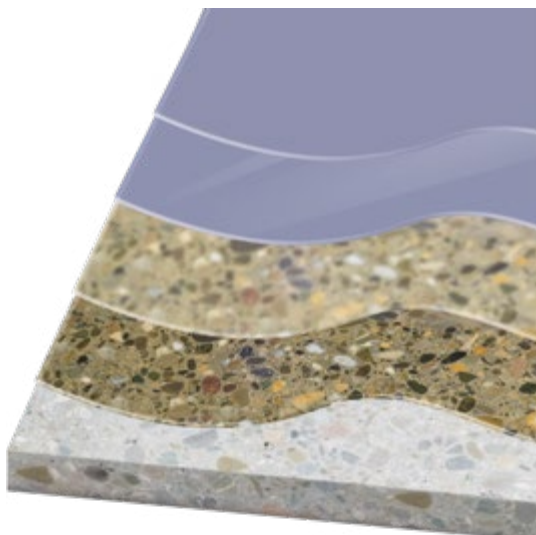


System **G3 KLB INDUSTRIAL LOW-VOC PU Comfort Sealed** is a high-quality, low-emission coating based on a 2-component polyurethane resin with high colour stability. It is particularly suitable for producing low-emission and decorative floors.

Offices, museums and other public facilities are increasingly coated with reactive resins. Here, the main focus is often an attractive appearance and high durability. A seamless installation gives the room an elegant atmosphere and also makes the floors very easy to clean. The bright, non-fade colour tone of the matt sealer results in a permanently noble and appealing look.

By using the products **EP 57, PU 425 Comfort** and **PU 806 E**, which are certified as extremely low-emission, the legal requirements for office spaces as recreation rooms are more than fulfilled.

Thus, even with little natural daylight, the offices appear friendly, spacious and inviting, which is further enhanced by large window fronts. The surfaces withstand the mechanical stresses of everyday office life or increased public traffic and can be cleaned quickly and easily. The system is also characterised by high walking comfort. It therefore constitutes a long-term, economical solution with excellent usage properties.



Coloured matt sealer  
**KLB-SYSTEM POLYURETHAN PU 806 E**

Top coat  
**KLB-SYSTEM POLYURETHAN PU 425 Comfort**

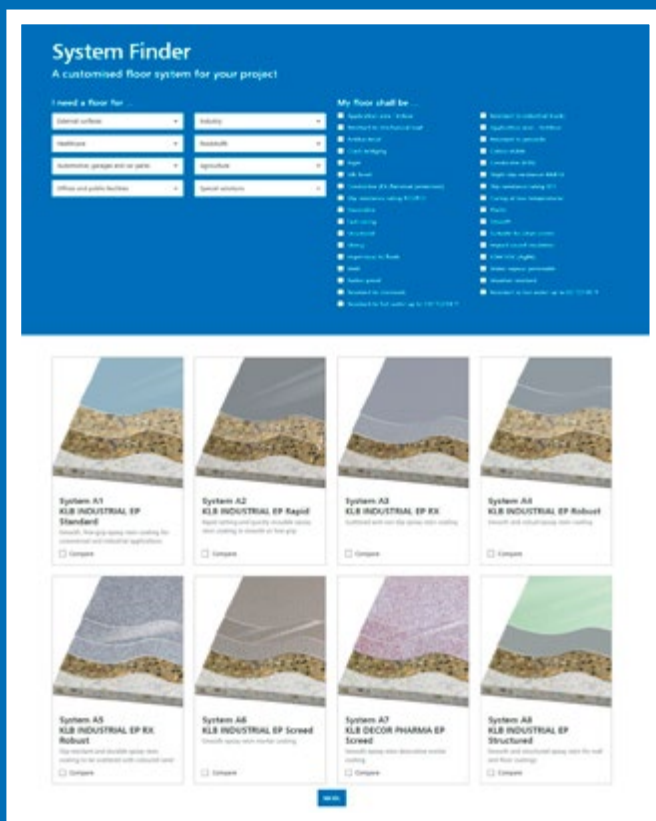
Scratch coat with  
**KLB-SYSTEM EPOXID EP 57** and mixed sand  
**KLB-Mischsand**  
Openly scattered with quartz sand **KLB-Quarzsand**

Primer  
**KLB-SYSTEM EPOXID EP 57**

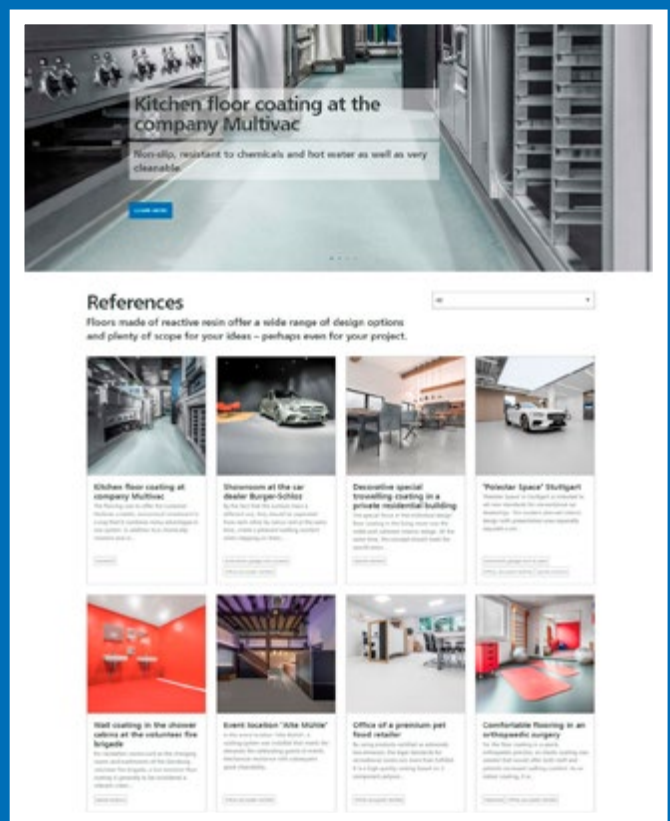


# The systematic approach to great flooring.

You can find more systems and references on our website:



[www.klb-koetzal.de/en/systemfinder](http://www.klb-koetzal.de/en/systemfinder)



[www.klb-koetzal.de/en/klb-references](http://www.klb-koetzal.de/en/klb-references)

**Please note:** This Object Insight brochure shows exemplary build-ups for a specific area of application. It does not replace qualified, object-specific advice from KLB for your project. All stated information is based on our experience and technical preparation. We guarantee the correct and proper quality of our products. We do not assume responsibility for the work not carried out by us, since we have no influence on the processing or processing conditions on site. We recommend on-site trials to be conducted in individual cases. With the publication of this new KLB product brochure, all prior information loses validity. The latest version is available electronically on our website [www.klb-koetzal.com](http://www.klb-koetzal.com). In addition, our "General Terms and Conditions" apply.



**KLB KÖTZTAL Lacke + Beschichtungen GmbH**

Günztalstraße 25  
89335 Ichenhausen, GERMANY

info@klb-koetzal.com

Phone: +49 (0) 8223-96 92-0

Fax: +49 (0) 8223-96 92-100



Certified according to ISO 9001.



[www.klb-koetzal.com](http://www.klb-koetzal.com)