

System H1

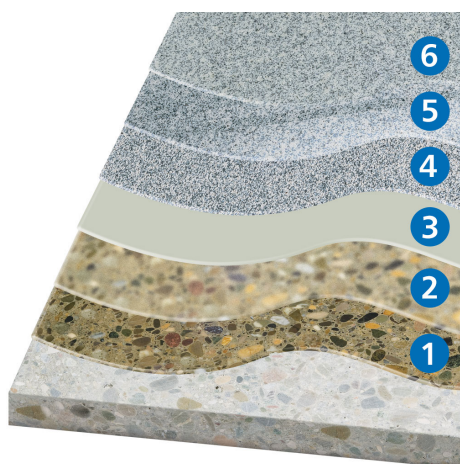
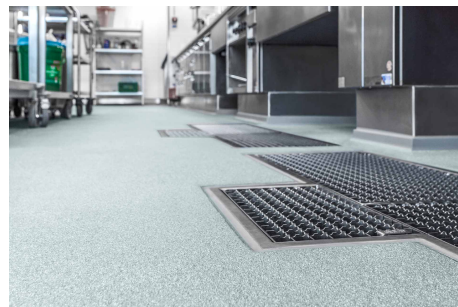
KLB KITCHEN EP Standard

Slip-resistant epoxy resin coating for kitchens

The coating system H1 complies with all requirements on both commercial or industrial kitchen surfaces and other wet areas that require robust and slip-resistant coatings.

Application areas for this system include above all the food and beverage industries, butcheries, slaughterhouses, commercial kitchens and many other sectors.

Alternative systems: [System H2](#) with low emission properties, [System H3](#) with rapid-setting properties.



6. Matt sealer **KLB-SYSTEM EPOXID EP 860 Clean**
5. Top sealer **KLB-SYSTEM EPOXID EP 175 Spezial**
4. Base layer with **KLB-SYSTEM EPOXID EP 216 Universal**, fully scattered with **KLB coloured quartz sand**
3. Composite sealant **KLB-SYSTEM EPOXID EP 290 Flex**
2. Scratch coat with **KLB-SYSTEM EPOXID EP 52 Spezialgrund** and mixed sand **KLB-Mischsand 2/1**
1. Primer **KLB-SYSTEM EPOXID EP 52 Spezialgrund**

System build-up

Layer	See product information for more details
Total layer thickness	approx. 6 - 7 mm
Matt sealer (6)	KLB-SYSTEM EPOXID EP 860
Top sealer (5)	KLB-SYSTEM EPOXID EP 175 Spezial
Base layer (4)	KLB-SYSTEM EPOXID EP 216 Universal , fully scattered with KLB coloured quartz sand CQS-46xx
Composite sealant (3)	KLB-SYSTEM EPOXID EP 290 Flex
Scratch coat (2)	KLB-SYSTEM EPOXID EP 52 Spezialgrund* with mixed sand KLB-Mischsand 2/1
Primer (1)	KLB-SYSTEM EPOXID EP 52 Spezialgrund* <small>*alternatively, EP 52 RAPID can be used.</small>
Substrate	Requirements to the substrate according to BEB worksheets and our primer list or by consultancy from our technical sales service/application technology

Area of application

Foodstuffs:

- Butcheries, slaughterhouses, dairy, meat and fish industry
- Beverages industry and breweries
- Commercial kitchens

System features

- resistant to hot water up to 65 °C / 149 °F
- resistant to chemicals
- impervious to fluids
- resistant to industrial trucks
- resistant to mechanical load
- rigid
- matt
- slip-resistant in R11
- slip-resistant in R12/R13
- structured

Tests and certifications

The following external test certificates are available for the system:

- Fire behaviour classification according to DIN EN 13501-01:2010-01: B_{fl}-s1
- Suitable for use in foodstuffs according to § 31 para. 1, German Food and Feed Code (German law LFGB).
- Slip-resistance according to DIN 51130 and BGR 181: grade R11 V4 (without matt sealer **EP 860**) and R12 V4 or V6
- Proof of usability as industrial kitchen coating
- Declaration of performance in accordance with Annex III to Regulation (EU) No. 305/2011 (Construction Products Regulation)
- Declaration of product conformity with Environmental Product Declarations (EPD)



Please consider the latest version of this system information on our website.

All stated information is based on our experience and technical preparation. We guarantee the correct and proper quality of our products. We do not assume any responsibility for the work not carried out by us, since we have no influence on the processing or processing conditions. We recommend on-site trials to be conducted. With appearance of this new KLB system information, all prior information loses validity. The updated version is available on our website www.klb-koetzta.com. In addition, our "General Terms and Conditions" apply.